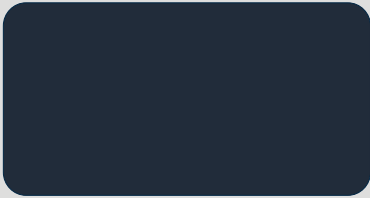




Siargo Ltd.



MF-GD Series

MEMS Mass Flow Meters

SIARGO MEMS FLOW SENSING PRODUCTS

User Manual (vD.1)



Siargo Ltd.

MEMS Mass Flow Meters

MF-GD Series

User Manual

Document No. 07-2016-M8 EN

Issue date: 2016.07

Revision: D.1

Siargo Ltd.

3100 De La Cruz Boulevard,
Suite 210,
Santa Clara, CA 95054
USA

Tel: +1(408)969.0368

Email: info@siargo.com

© Copyright 2016 by Siargo Ltd.

Siargo Ltd. and its subsidiaries reserve the rights to change the specifications and/or descriptions without prior notice. For further information and updates, please visit:

www.Siargo.com

Usage

This product is designed for industrial gas mass flow metering and control. The safety rating of the product is Ex ia IIC T4. All standard explosive gas handling procedures must be observed for safety during installation and meter usage.

This product is powered with lithium ion battery as a standalone unit. When connecting the RS485 communication port with external power, electrical wire and installation with the intrinsic device safety procedure must be observed.

The operational conditions of the product are described by its specifications in this manual. Please make sure each of the specifications is fully understood, and acquire the full knowledge of the field where the product will be installed. Please consult the manufacturer before applying it in other working conditions, otherwise the product may not function properly or would be damaged or cause other irreversible consequences.

Before operation, leakage test must be performed after installation for safety assurance.

All local regulatory requirements must be observed and verified for additional safety precautions.

The product performance requires pre-calibration that would best be applied to the specified conditions. Use of the product in other conditions may lead to unexpected results or even to unrecoverable damages.

Operation, installation, storage, and maintenance of the product must strictly follow the instructions of this user manual. It is highly recommended that the maintenance should be performed by skilled personnel or trained operators. Unpredicted consequences may otherwise be caused. All the installation, storage, and maintenance of the product must be handled by qualified operators. This user manual should be placed near the product for easy access.

Before using the product, the user should read this user manual carefully and completely.

It is recommended that the product should be re-calibrated and maintained in every two years or at a time period if deemed necessary.



Cautions

1. Do not apply this products to any gas medium that contains excessive liquid or solid debris, that may lead to malfunction or unrecoverable damage of the product.
2. Do not change any software and hardware of the product. All software and hardware of the product have been certified at the time of manufacture.
3. Do not use any unit of the product if suspect of malfunction.
4. Do not use this product in any excessive radiation or vibration environment.
5. Only qualified or accredited personnel by Siargo can perform repair services. Siargo shall not be liable to any products that have be altered or damaged before shipping for product verification and services.
6. When communicating with the meter via the communication port, such as download the historical data from the meter, it is highly recommended to use the software provided by manufacturer or the communication coding should be done by referring the requirements of the user interface described in this manual.
7. The product body is made of aluminum alloy, do not hammer or use sharp tooling during installation.
8. The meter connection are threaded with M-thread and opted with BSPT connectors, please make sure the pipe connectors have the same thread. Force connection would cause unpredicted damage and/or irrecoverable malfunction.
9. The battery pack should not be combined with arbitrary lithium ion battery on market. Consult manufacturer for battery requirements or obtain the replacement from manufacturer.
10. Read the manual carefully before processing of any maintenance or troubleshooting.

Table of Content

Usage	1
Cautions	2
Introduction	4
Working principle	5
Description	5
Dimensions	6
Product selection	7
Package description	7
Installation	8
Specifications	10
Meter function	12
LCD display	12
Connection	12
Data communications	13
RS485	13
Pulse output	13
Automatic data record	13
Safety	14
Maintenance	14
Troubleshooting	15
Storage	15
Warranty	16
Service and order	17

Introduction

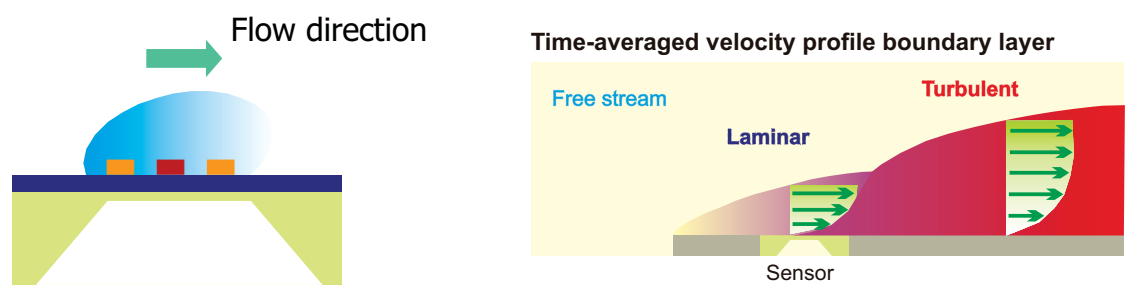
The MFG series gas flow meters are specially designed for gas mass flow applications. Based on Siargo's proprietary MEMS flow sensing technology and control circuit technology, the all electronic meters are powered by battery and offer a wide dynamic range while maintaining the high sensitivity at the low flow for gas monitor and measurement. The MEMS flow sensors provide direct mass flow capability without additional temperature and pressure compensation. The sensors are packaged using the boundary layer technology that ensures a time-averaged velocity profile across the sensor. The sensing elements are at the center of the flow channel that is designed as a Venturi configuration. The boundary layer condition would force the flow to redistribute at the sensor assembly forming a laminar flow that make it possible for applications in gases with a proper calibration and circuitry compensation.

The meters have industrial standard RS485 Modbus communication interface that is ready for remote data logging or networking. The enhanced data safety is realized via the storage designed in the control circuitry that allows the user to program the records of the flow status that can be transmitted via the network or downloaded with a handheld or personal computer with the manufacturer provided software.

The meters are best for clean and dry gas flow measurement in gas mass flow applications. Other gases such as water gas with excessive moisture may cause instability due to water condensation. The meters also come with options for GPRS data transmission, pre-paid IC card reader attachment with a shut-off valve. Other convenient features include compact in size for logistic and well isolated standalone unit for reduction of external manipulations.

- Wide dynamic range with integrated silicon MEMS flow sensors
- Direct measurement of mass flow without additional temperature and pressure compensation
- Battery powered standalone unit with long battery life
- High accuracy and repeatability at full dynamic range
- Standard RS485 Modbus interface for remote data logging or networking
- Additional flow status records in circuitry for data safety
- Optional GPRS data transmission accessories or pre-paid IC card function
- Compact size for easy installation and transportation

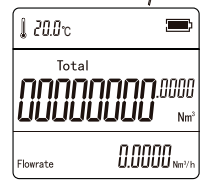
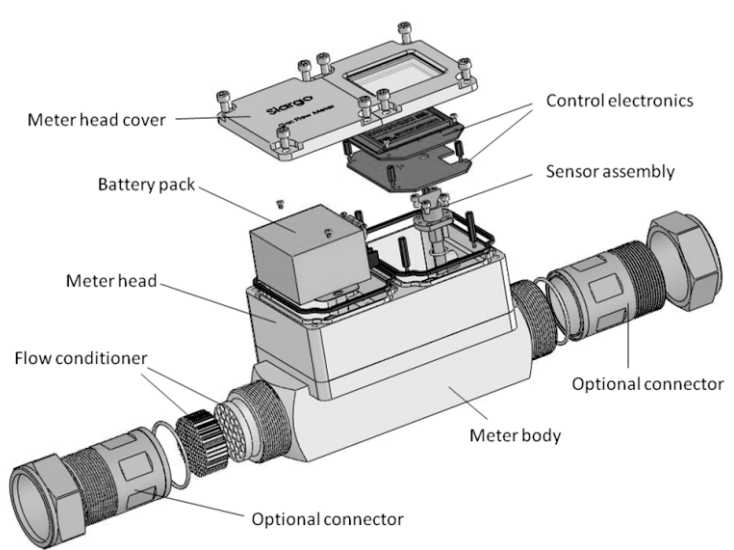
Working principle



The MEMS flow sensor senses flow by the calorimetric thermal mass flow measurement principle. A micro-heater is placed at the middle of two temperature sensors symmetrically placed at upstream and downstream. The cavity below the micro-heater and sensors plays the role of thermal isolation as it is filled with the gas. When the flow passes through the micro-heater, heat will be carried away by the flow medium, and the temperature differences measured by the up- and down-stream temperature sensors are directly proportional to the mass flow of the flow medium. By calibration at the standard conditions, the flow data at the sensor can be properly registered. Compared to the traditional thermal mass flow sensing configuration, the MEMS sensor can be packaged into a plate as indicated by the above graph. The sensor assembly is then placed into the flow channel and the plate assembly serves as the additional condition from the boundary layer configuration resulting in a laminar flow. Accurate flow rate is obtained by calibration with the standard gas at the predetermined conditions.

Description

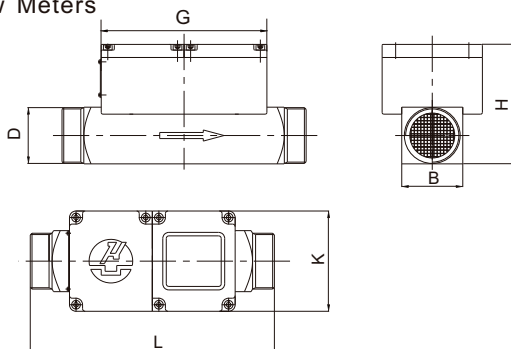
The meter components are show in the following graph:



- Display:**
- Instant flow
 - Accumulated flow
 - Battery status
 - Ambient temperature

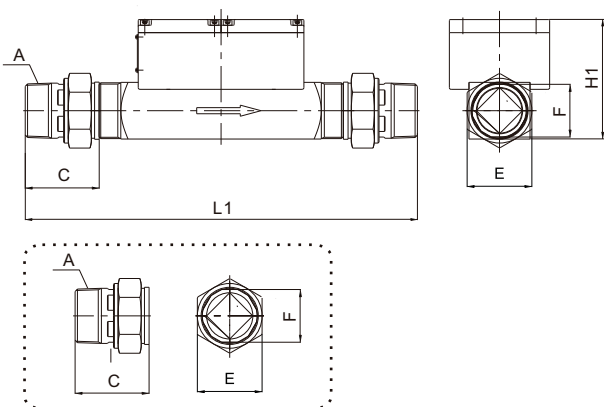
Dimensions

Flow Meters



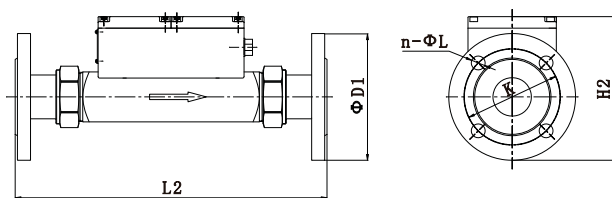
	D	B	L	H	K	G
MF32G	M48X2	70	280	132	115	188
MF50G	M64X2	70	280	137	115	188
MF65G	M80X2	90	360	162	115	188
MF80G	M100X2	100	360	172	115	188

With BSPT connectors



	L1	H1	C	E	F	A
MF32G	440	132	80	55	40	R1¼
MF50G	440	137	80	70	57	R2
MF65G	600	162	120	90	72	R2½
MF80G	660	172	150	110	86	R3

With flanges



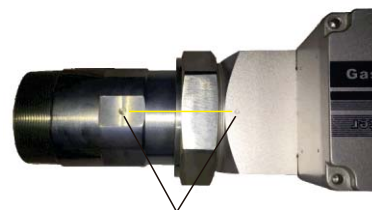
	L2	H2	ΦD1	n-ΦL	ΦK
MF32G	386	160	Φ115	4-Φ14	Φ80
MF50G	396	187	Φ165	4-Φ18	Φ125
MF65G	543	217	Φ200	8-Φ18	Φ160
MF80G	577	222	Φ200	8-Φ18	Φ160

Notes:

1. Each flow meter has two connectors and the total length is $L + C * 2$.
2. For MF65GD and MF80GD, the connector with rectifier should be installed at the entrance, and the point marks in a line.

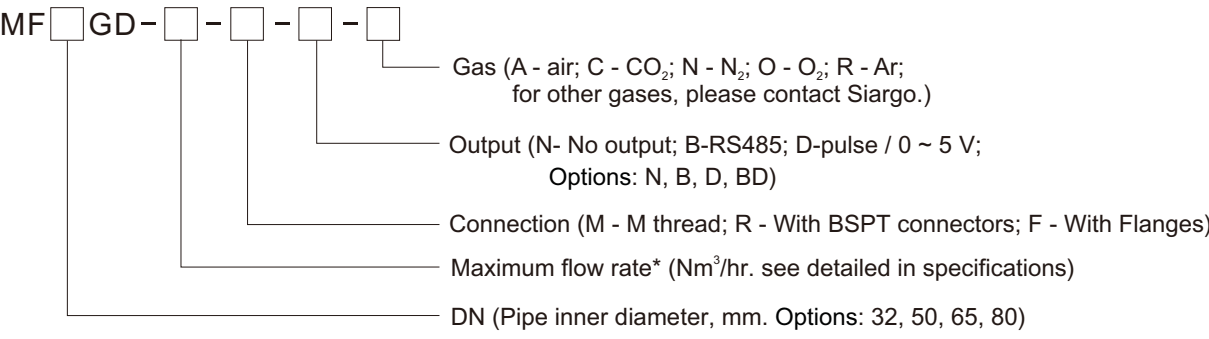


Rectifier at the entrance



Point Marks

Product selection



* There is flow rate number only.

Package description

Upon unpacking the product, the followings should be intact from the shipping container:

- 1) This product
- 2) Cable
- 3) User Manual
- 4) QC document or product certificate

the product physical integrity should be inspected to ensure no visual damage can be observed. If any items as listed above are missing or any physical damages are observed.

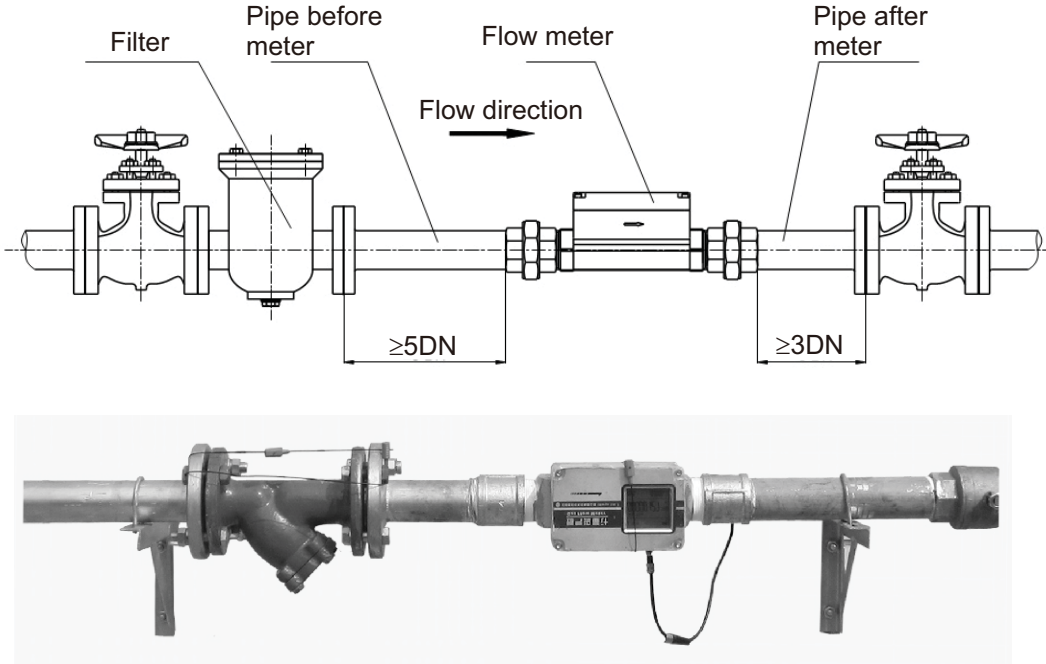
Please contact the manufacturer and/or the shipping agents to place a return/exchange or to identify the cause during the transit. If you are uncertain of the installation or have any questions about the shipment, please also contact the manufacturer or the shipping agents before further process.

Installation

Cautions

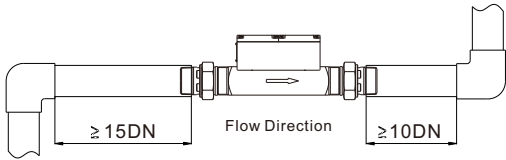
1. The meter can be either installed horizontally or perpendicularly. A horizontal installation is recommended for easier meter reading.
2. After the installation pipe on the flow channel is prepared, make sure there is no any metal particles or other harmful debris present inside the flow channel. Avoid strong vibration sources, fire sources, direct expose to rain, or sun, or other sources that may lead to safety issues.
3. Ensure the product is free of visible damages. And check the status of meter power, make sure there is no abnormal in display or other indications.
4. Engage the meter with the prepared installation pipe, make sure the thread or flange can properly seal. Check the meter position and make sure there is no twists or other mechanical faults.
5. The flow measurement direction marked on the meter should be aligned with the flow direction in the flow channel.
6. It is recommended that a high efficient filter should be installed before the meter.
7. To ensure the proper operation of the meter, make sure that there is no presence of foreign gases other than the designated ones.
8. The meter should be installed avoiding valves, sharp turns and other obstacles possibly presented in the

The following graphs show the installation configuration. A filter is necessary to avoid heavy particles or debris entering into the meter which may have impact to the meter performance.

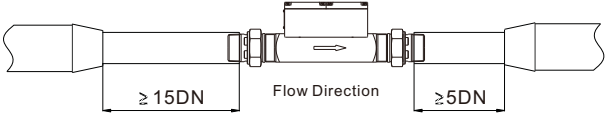


Graphic illustration for the installation.

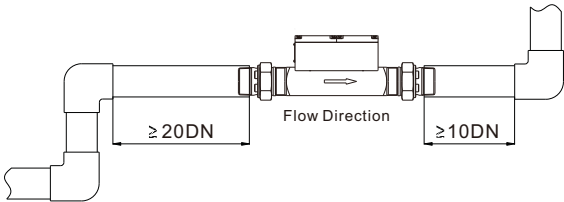
If there is requirement of different pipe size at either upstream or downstream, the size of the pipe diameters should be larger than that of the selected meters. Please see detailed as below:



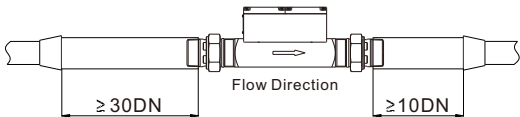
(a) 90 degree elbow or T-piece



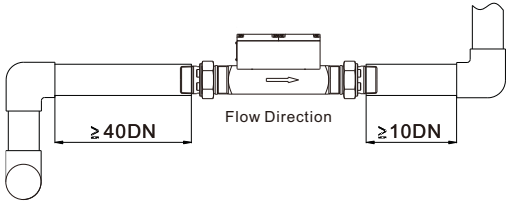
(d) Reduction



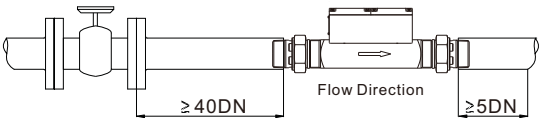
(b) 2 x 90 degree elbow



(e) Expansion



(c) 2 x 90 degree elbow, 3-dimensional



(f) Control valve

Specifications

Model	DN (mm)	Max. Flow rate (Nm ³ /h)	Min. Flow rate (Nm ³ /h)
MF32GD	32	10, 16 or 25	0.25
MF50GD	50	40 or 65	0.65
MF65GD	65	100	1.0
MF80GD	80	160	1.6

Accuracy	$\pm(1.5 + 0.5 \text{ FS}) \%$
Turn-down Ratio	100:1
Max. Working Pressure	0.2 MPa
Environment Temperature	-20 ~ +60 °C
Medium Temperature	-10 ~ +55 °C
Humidity	< 95%RH (No icing or condensation)
Power Supply	3.6V battery (L3638A)
Battery life	36 months
Real time clock life	10 years
Output	RS485, Pulse
LCD display	Flowrate; Accumulated flowrate; Battery status
Calibration	Air @ 20°C, 101.325kPa
Mechanical	M-Thread (BSPT-Thread or flange with Mechanical connector)
Protection	IP66
Ex Proof	Ex ia IIC T4

Notes:

1. Standard conditions: 20°C; 101,325 kPa.
2. Humidity: flow medium must not have condensation or icing;

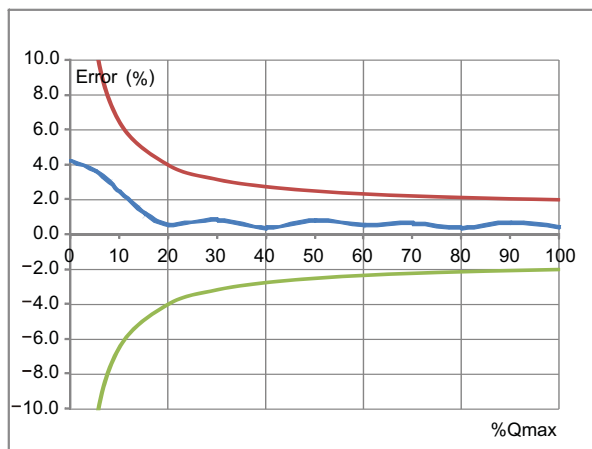
For other configurations, please contact the manufacturer. We can offer customized products from pipe diameter 3/4" and above but not larger than 4" for this series of products.

For the communication mode, if no external power sources, the battery may be degraded fast. For battery information, please contact manufacturer or its representatives.

Data storage

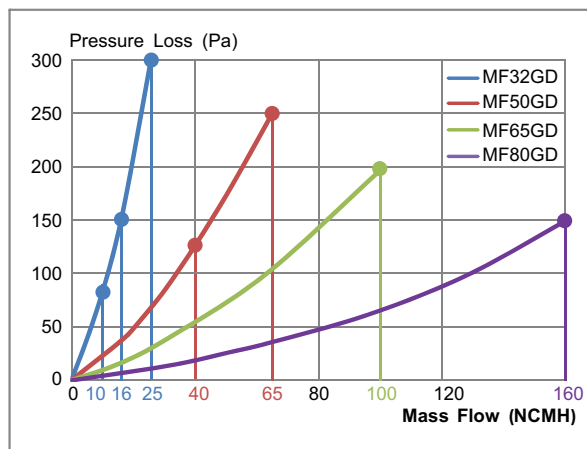
1. The meter can record and store up to 1000 items daily
2. The time interval of the data storage can be programmed (minimal 3 min and max 240 min.) The storage information include time (hh:mm month day year); flow rate and accumulated flow rate. The maximum items that can be stored are 2000 entries.
3. The other stored items (max 1000) include over flow limit alarm, power failure and sensor errors)

Error function



(at 20°C; 101.325kPa)

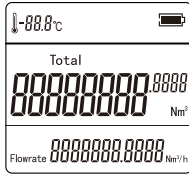
Pressure loss



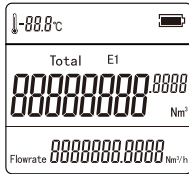
(at 20°C, 101.325kPa)

Meter Functions

LCD display

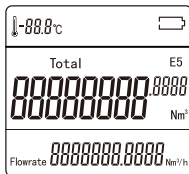


For the meters that is battery powered, it is suggested that the LCD display should be the major interface to access the meter reading if no external power supply will be provided for data communication. The LCD display shows accumulated flow (centered, large characters, in Nm³, and can be displayed from 0.000 to 99999999.999 Nm³), instant flow is shown in Nm³/h, and can be displayed from 0.000 to max flow in the corresponding models. The displayed temperature is a ambient temperature.



The standard conditions at calibration are 20°C and 101.325kPa.

In case that the meter is malfunctioning due to sensor damage, the “E1” error sign will be shown and flash.



In case that the meter is out of battery (battery power model), the battery sign will indicate an empty battery and an error sign “E5” will be shown and flash.

Other alarm code E2~E4:

- E2 Sensor covered with excessive foreign materials
- E3 Hardware error
- E4 Over flow range

Electrical connection

Color	Definition	Description
Red	Power+ *	4 ~ 10 Vdc power supply, Idc > 50 mA
Black	Power GND/ Pulse GND	Power ground/ Pulse ground
Green	RS485-A	RS485 A (+)
Brown	RS485-B	RS485 B (-)
Orange	Pulse output	Pulse output for total

* The meters is battery powered, power supply is provided for RS485 data communication

RS485 Communication

The meter has an RS485 communication port. It is recommended that when this communication port is enabled, an external power supply should be used to ensure the battery life.

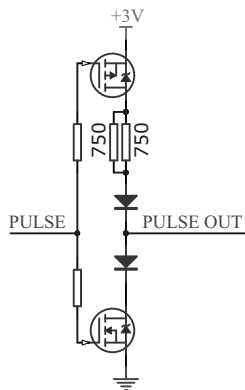
or purposes of computer control and networking, the RS485 is used for communication with the following preferred settings:

- Baud rate (Bits per second): 9600
- Date bits: 8
- Stop bits: 1
- Parity: None
- Flow control: None

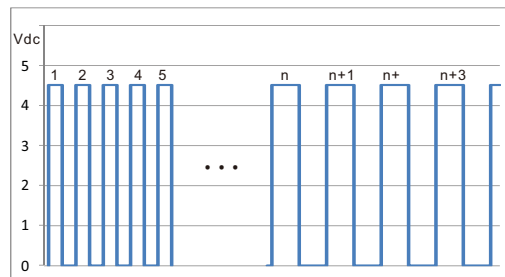
For detailed protocol, please contact Siargo.

Pulse output

The meter supply pulse output in form of even square wave. The even square wave is composed of 3 V signal high and 0V signal low, and every pulse equal to 1Nm^3 , 0.1Nm^3 , 0.01Nm^3 , 0.001Nm^3 or 0.0001Nm^3 . (default is 1Nm^3). The pulse level can be converted to other values, below circuit for reference.



Pulse level conversion circuit



Even square wave of accumulated flow

Automatic data record

The meter can automatically record mass flow rate, accumulated flow rate and time. To retrieve these data, please contact manufacturer for the necessary user interface software. The data storage interval can be customized and please contact manufacturer for further information.

Safety

Wetted materials and compatibility

The meter body is made of stainless steel and cast aluminum alloy. Sensors comprise of silicon, silicon nitride and silicon dioxide and the sensor surfaces are passivated with silicon nitride and silicon dioxide. The electronic sealing is provided by RTV (room temperature vulcanizing) silicone sealant WR-7 of HOCH₃ (SiO) nCH₃H.

Safety precautions

The product is designed for use with clean and dry gas mass flow applications. Although it may be able to apply for other gases, the product cannot be used for gas metrology of fluoride or fluoride containing gases. For updates of the product certification information, please contact manufacturer or visit www.Siargo.com.

Use for other gases such as extreme corrosive and toxic may cause the product malfunctioning or even severe damages. The product sealing is ensured to work under working pressure as indicated on the product tag. Although it has been undergone leakage proof before the shipment, cautions and further leakage test are extremely important at installation since any leakage could cause severe safety issue.

Attention: any alternation and/or improper use of the product without the permission of the manufacturer can cause unpredicted damages and even injuries or other severe situations. Siargo or any of its employees, subsidiaries shall not be hold and indemnified against such consequences due to such circumstances via improper use of the product.

Maintenance

Calibration

The meter at the time of shipping is fully calibrated at the conditions indicated on the product tag. Use of the product under other conditions will lead to unpredictable results. Please contact the manufacture before such applications.

To ensure the meter performance, the meter should be calibrated not over 24 months under normal operation conditions.

Maintenance

Attention: without prior permission of the manufacturer, please do not attempt to alter any parts of the product as it may cause unrecoverable damages. If there are questions or doubts, please contact manufacturer immediately before further actions. Please ensure the DC power is off before disassembling the meter.

All maintenance of the meters should be done by trained and certified personnel by Siargo Ltd.

Troubleshooting

Errors	Possible causes	Actions
No display	<ol style="list-style-type: none"> 1. Wrong wire connection 2. LCD malfunction 	<ol style="list-style-type: none"> 1. Follow user manual, reconnect the wires 2. Check the LCD connection, otherwise replace
Display nonzero while no gas flow in the pipe	<ol style="list-style-type: none"> 1. Valve may not be closed completely 2. Pipe leakage 	<ol style="list-style-type: none"> 1. Check valve and perform leak tests 2. Check meter offset
No flow reading	<ol style="list-style-type: none"> 1. Power supply error 2. Sensor damaged 	<ol style="list-style-type: none"> 1. Check power source 2. Check sensor error code, replace sensor
Flow rate drops	<ol style="list-style-type: none"> 1. Flow channel clogging 2. Foreign materials deposit on sensor 	<ol style="list-style-type: none"> 1. Check and/or change pipe filter 2. Clean or change sensor
Communication malfunction	<ol style="list-style-type: none"> 1. Wrong wire connection 2. Wrong baud rate 3. Pin contact error 	<ol style="list-style-type: none"> 1. Check wire connections 2. Check baud rate settings 3. Check hardware connections/contacts
Battery empty	<ol style="list-style-type: none"> 1. Over lifetime, check current 	<ol style="list-style-type: none"> 1. Change battery, check internal battery circuitry
No pulse output	<ol style="list-style-type: none"> 1. Wrong wire connection 	<ol style="list-style-type: none"> 1. Reconnect the wires

For other errors or additional information, please contact the manufacturer.

Storage

Storage

The products if not being installed upon receiving, should be stored in an area without the presence of strong chemicals, electromagnetic interference and vibration. The environments should be dry (<95%RH) and the temperature should be in the range of -25 to 80°C.

Transportation

During transportation, the products should be properly packaged if not being placed in their original package containers. Such package should be able to resist vibration. Expose to rain or chemicals are strictly prohibited. Labels such as “handle with care”, “avoid collision” should be applied or otherwise clearly marked.

Warranty

(Effective September 2005)

Siargo warrants the products sold hereunder, properly used and properly installed under normal circumstances and service as described in the user's manual, shall be free from faulty materials or workmanship for 180 days for OEM products, and 365 days for non-OEM products from the date of shipment. This warranty period is inclusive of any statutory warranty. Any repair or replacement serviced product shall bear the same terms in this warranty.

Siargo makes no other warranty, expressed or implied and assumes no liability for any special or incidental damage or charges, including but not limited to any damages or charges due to installation, dismantling, reinstallation or any other consequential or indirect damages of any kind. To the extent permitted by Law, the exclusive remedy of the user or purchaser, and the limit of Siargo's liability for any and all losses, injuries or damages concerning the products including claims based on contract, negligence, tort, strictly liability or otherwise shall be the return of products to Siargo, and upon verification by Siargo to prove to be defective, at its sole option, to refund, repair or replacement of the products. No Action, regardless of form, may be brought against Siargo more than 365 days after a cause of action has accrued. The products returned under warranty to Siargo shall be at user or purchaser's risk of loss, and will be returned, if at all, at Siargo's risk of loss.

Purchasers or users are deemed to have accepted this limitation of warranty and liability, which contains the complete and exclusive limited warranty of Siargo, and it shall not be amended, modified or its terms waived except by Siargo's sole action.

This warranty is subject to the following exclusions:

1. Products that have been altered, modified or have been subject to unusual physical or electrical circumstances indicated but not limited to those stated in the user's manual or any other actions which cannot be deemed as proper use of the products
2. Siargo does not provide any warranty on finished goods manufactured by others. Only the original manufacturer's warranty applies.

Services and order

Siargo Ltd. is making every effort to ensure the quality of the products. In case of questions, and or product supports, please contact customer service at the address listed below. We will respond your request in a timely fashion and will work with you toward your complete satisfaction.

Customer service and all orders should be addressed to

Headquarters

Siargo Ltd.
3100 De La Cruz Boulevard, Suite 210,
Santa Clara, California 95054 USA,
Phone: +01(408)969-0368
Email: info@Siargo.com

Representative in Japan

Marubeni Information Systems Co., Ltd.
Device Solutions Department
14th Floor, Shinjuku Garden Tower,
3-8-2, Okubo, Shinjuku-ku, Tokyo 169-0072, Japan
Phone: +81-3-4243-4160
Fax: +81-3-4243-4198

Representative in Europe

IDENTIC Stefanie Trojan
In der Siedlerruh 24
69123 Heidelberg / Germany
Phone: +49-(0)6221-7509777
Fax: +49-(0)6221-7509779
Email: info@identic.de

For orders, please provide accurate and full post address. Siargo will not ship to P.O. Boxes or via a third party.

For further information and updates, please visit www.Siargo.com.